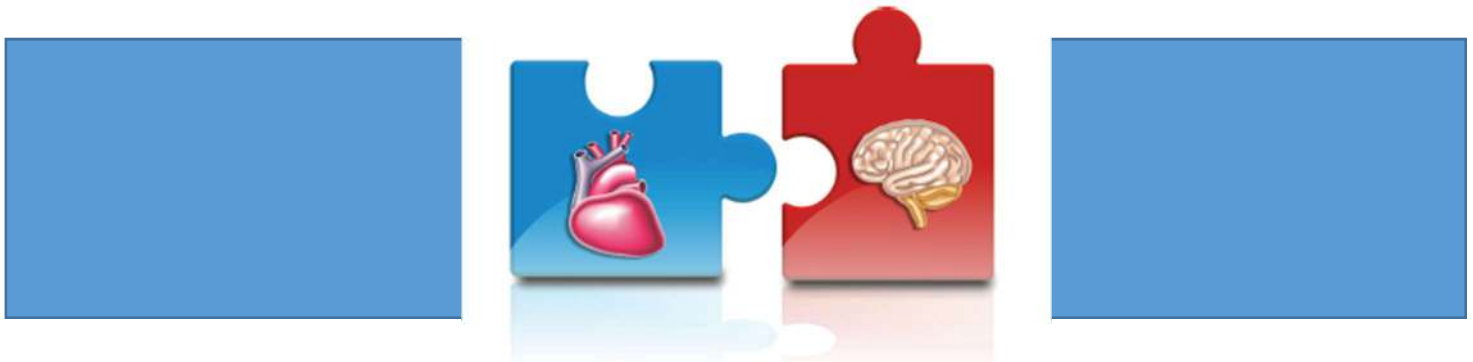


2017 Panhandle RAC Stroke & STEMI Conference

April 24, 2017

Laura W. Bush Institute for Women’s Health (TTUHSC)
 1400 Wallace Blvd • Amarillo, TX



Course Description

This course will provide participants with an update on the latest research and best practices in the management of patients with cardiovascular disease to include prehospital management of both stroke and STEMI, emergency department management of acute stroke and STEMI, STEMI identification and ways for EMS and hospitals to partner to provide optimal public education and patient care.

Course Objectives

- Discuss pre-hospital management of patients with stroke and cardiac events.
- Discuss best practices in emergency department management of stroke and STEMI.
- Discuss proper identification of STEMI patients.
- Discuss ways for EMS and hospitals to partner to provide public education and care.

Registration

RAC A Members	\$20.00
RAC B Members	\$20.00
Physicians and RNs	\$175.00
Paramedics	\$100.00

Cancellation Policy

Reservations for this course will be secured with completion of the Eventbrite registration link and payment to TETAF. Registrations received without payment will not be reserved until payment is received.

While there are no refunds for cancellation by RAC A and B participants, substitutions from the same organization will be allowed.

Cancellations by non-RAC A or B attendees will be accepted through **April 14**, minus a \$25 cancellation fee. Substitutions from the same organization will be allowed.

Agenda

- 7:45 AM** **Registration**
- 8:00 AM** **Welcome**
- 8:15-9:15 AM** **Emergency Department
Management of Acute Stroke**
Robert Greenberg, MD, FACEP, Baylor Scott & White
- 9:15-10:15 AM** **Emergency Department
Management of Acute STEMI**
Robert Greenberg, MD, FACEP, Baylor Scott & White
- 10:15-10:30 AM** **Break**
- 10:30-11:30 AM** **From the Couch to the Cath Lab:
How to Create the Perfect Storm**
Karen Yates, BSN, RN, Methodist Mansfield
- 11:30 AM-12:30 PM** **Lunch (provided)**
- 12:30-1:15 PM** **STEMI Identification Made Easy**
Alan Taylor, MD, Methodist Medical Center Dallas
- 1:15-2:15 PM** **Prehospital Management
of Acute Stroke**
Scott Christopher, RN, EMT-P, PHI Medical
- 2:15-2:30 PM** **Break**
- 2:30-3:30 PM** **Prehospital Management
of Acute STEMI**
Scott Christopher, RN, EMT-P, PHI Medical
- 3:30 PM** **Questions & Wrap-Up**

Register Now

Registration is now open online at:
<https://2017panhandle-rac-stroke-stemi.eventbrite.com>

Conference Location

The conference will take place in the auditorium of the Laura W. Institute for Women's Health at the Texas Tech University Health Sciences Center in Amarillo.

Accommodations

The recommended hotel is the Home2 Suites located at 8251 W. Amarillo Blvd.

Continuing Education

Texas EMS, Trauma and Acute Care Foundation is an approved provider of continuing nursing education by the Texas Nurses Association, an accredited approver by the American Nurses Credentialing Center's Commission on Accreditation.

Nurses who attend the entire educational activity and submit a completed evaluation will receive 6 Contact Hours.

EMS personnel who attend the entire educational activity and complete an evaluation form will receive 7.2 Contact Hours.

