



**TETAF**

TEXAS EMS TRAUMA &  
ACUTE CARE FOUNDATION



**Texas  
Perinatal  
Services**

A Program of the  
Texas EMS Trauma &  
Acute Care Foundation

2023  

---

**TETAF  
Annual  
Report**



Connect

# A MESSAGE FROM OUR PRESIDENT AND CEO: A MILESTONE YEAR

In late 2008, the Texas Department of State Health Services granted the Texas EMS, Trauma & Acute Care Foundation (TETAF) the authority to provide verification surveys for Level III and Level IV designated trauma facilities. Our organization and processes have evolved greatly, but the one constant is always our mission, "...to strengthen regional health care delivery systems through collaboration, advocacy, and education." It is at the core of everything we do. It is why we have made significant strides in our 15th year.

Our commitment to our mission led to notable accomplishments in 2023:

- The TETAF/Texas Perinatal Services survey team and surveyors completed 203 surveys across all survey service lines (trauma, stroke, maternal, neonatal).
- Successfully advocated for \$6.6 million for the biennium for the Regional Advisory Councils (RACs). This increase is the largest since RAC funding was established and nearly doubled RAC funding.
- The TETAF Advocacy team continued to advocate for funding to the Texas Trauma System through Account 5111. A total of \$96 million for FY 24 and \$98.1 million for FY 25 will be appropriated.
- TETAF added a new staff member to focus on the growing needs in maternal and neonatal care.
- TETAF expanded its monthly forum to the new Texas Quality Care Forum to include quality assessment topics focused on trauma, stroke, maternal, and neonatal care, as well as EMS.

- Education to stakeholders was provided throughout the year including two virtual TETAF Hospital Data Management Courses (HDMC), a virtual STOP THE BLEED® Train the Trainer course, educational opportunities for the Texas Trauma Coordinators Forum, and the Texas Quality Care Forum each month.

This is only a brief highlight of what TETAF staff, its Board of Directors, surveyors, and committees accomplished during 2023 to ensure a strong trauma, stroke, maternal, neonatal, and emergency health care system for Texas. I am proud of how far we have come in 15 years, and I invite you to learn more about this year's successes in this annual report.



**Dinah S. Welsh**  
President and CEO



Our organization and processes have evolved in the past 15 years, but the one constant is always our mission.

# CONTENTS

[A MESSAGE FROM OUR PRESIDENT AND CEO: A MILESTONE YEAR](#)

[OUR MISSION, OUR STORY](#)

[A YEAR OF MISSION](#)

---

[TETAF SURVEY SERVICE LINES](#)

[A NEW APPROACH TO SURVEYS WITH NEW RULES AND NEW GUIDELINES](#)

[THE YEAR IN NUMBERS](#)

---

[TRAUMA](#)

[A WORK IN PROGRESS WITH TRAUMA DESIGNATION RULE REVISIONS](#)

---

[STROKE](#)

[ONE YEAR OF SURVEYING TO THE NEW STROKE RULE](#)

---

[NEONATAL](#)

[TEXAS PERINATAL SERVICES EXPANDS ITS TEAM](#)

[PREPARING FOR NEW NEONATAL LEVEL OF CARE DESIGNATION RULE](#)

[BRINGING STATE AND NATIONAL NEONATAL INSIGHT TOGETHER](#)

---

[MATERNAL](#)

[MATERNAL IS SECOND SERVICE LINE SURVEYED TO NEW RULE LEARNING AND STRENGTHENING MATERNAL CARE THROUGH A NEW CYCLE](#)

---

[ADVOCACY](#)

[AN UNPRECEDENTED LEGISLATIVE SESSION](#)

[ADVOCATING DURING THE INTERIM LEADS TO THE LARGEST FUNDING INCREASE FOR THE REGIONAL ADVISORY COUNCILS](#)

[ENSURING LEVEL FUNDING FOR THE STATE'S TRAUMA SYSTEM](#)

[ADVOCATING FOR MOTHERS AND NEWBORNS IN TEXAS](#)

[ADVOCATING ON CAPITOL HILL](#)

---

[EDUCATION](#)

[TETAF WELCOMES NEW EDUCATION COORDINATOR](#)

[TETAF HOSPITAL DATA MANAGEMENT COURSE STAYS VIRTUAL IN 2023](#)

[TETAF HOSTS A STOP THE BLEED® TRAIN THE TRAINER WEBINAR](#)

[TEXAS QUALITY CARE FORUM BRINGS A VARIETY OF TOPICS TO STAKEHOLDERS](#)

---

[REGIONAL ADVISORY COUNCILS](#)

[THE TETAF AND REGIONAL ADVISORY COUNCIL COLLABORATION](#)

---

[COLLABORATIONS](#)

[UNITING TO STRENGTHEN HEALTH CARE FOR TEXANS](#)

---

[TEXAS TQIP](#)

[A NEW LEADER AT THE HELM OF TEXAS TQIP COLLABORATIVE](#)

---

[FINANCIALS](#)

[FY 2022-2023 TOTAL OPERATING/EXPENSE BUDGET/REVENUE](#)

[ABOUT US](#)

[OUR TEAM](#)

[2023 TETAF BOARD OF DIRECTORS](#)

[FIVE NEW LEADERS AND A NEW TETAF GENERAL](#)

[ASSEMBLY CHAIR ELECTED](#)

[TETAF BOARD MEMBERS EARN HONORS](#)

[OUR COMMITTEES](#)

[OUR SURVEYORS](#)

[OUR HOSPITALS](#)

[A LOOK AHEAD TO 2024](#)

# OUR MISSION, OUR STORY

## Our Mission

The Texas EMS Trauma & Acute Care Foundation's mission is to strengthen regional health care delivery systems through collaboration, advocacy, and education.

## Our Story

In the early 2000s, the need for survey services in Texas was expanding significantly. Funding was limited due to the Texas Legislature needing to streamline the state's budget. The Texas Department of State Health Services (DSHS) was no longer able to provide survey services due to a reduction in funds. The American College of Surgeons (ACS) was the only option for Level III trauma surveys and there was not an option for Level IVs, plus hospitals voiced concerns regarding the cost of surveys from ACS. Additionally, there was a strong desire to have a community of trauma, EMS, and acute care advocates to speak louder with a centralized voice for advocacy. These concerns and needs led the 22 Regional Advisory Councils (RACs) across the Texas trauma community to support the launch of the Texas EMS, Trauma & Acute Care Foundation (TETAF).

As a 501(c)(3) nonprofit organization, TETAF fills the gap where federal, state, and local governments, and private entities cannot provide statewide services. In 2008, DSHS granted TETAF the

authority to provide verification surveys for Level III and Level IV designated trauma facilities. The first TETAF staff members were hired in 2009 to fully implement TETAF's mission. The following year, TETAF's role grew to provide Level III stroke verification surveys. In 2015, TETAF further expanded its reach and was approved to provide neonatal verification surveys. In August 2016, TETAF launched neonatal leveling surveys in Texas and provided more than 100 surveys in the first 3-year cycle.

Following closely behind neonatal, in August 2018 TETAF launched maternal leveling verification surveys along with the creation of TETAF's Texas Perinatal Services division. Texas Perinatal Services continues to lead the state in perinatal verification surveys. Today, with more than 150 credentialed surveyors, TETAF and Texas Perinatal Services provide verification surveys for trauma, stroke, neonatal, and maternal in more hospitals than any other surveying entity.

Driven by our mission, TETAF continues to ensure comprehensive, quality care is provided to patients in Texas.

# A YEAR OF MISSION



203 surveys completed across all four survey service lines.



Maternal

Neonatal

Texas Perinatal Services continues to survey the majority of maternal and neonatal hospital facilities required to be surveyed in Texas.

# \$6.6M

\$6.6 million in funding for the biennium secured for the Regional Advisory Councils (RACs).



120 attended TETAF's virtual STOP THE BLEED® Train the Trainer course.



\$194 million secured for the Texas Trauma System for the biennium.

# 1,675

1,675.8 hours of continuing professional development earned through TETAF education.

# TETAF SURVEY SERVICE LINES



TETAF provides verification surveys in trauma, stroke, maternal, and neonatal care in Texas.

[www.tetaf.org](http://www.tetaf.org)

# A NEW APPROACH TO SURVEYS WITH NEW RULES AND NEW GUIDELINES

Since its inception, TETAF has had a voice in the development of the levels of care designation rules for all four service lines. In 2023, every service line experienced change with the goal to strengthen our health care systems.

TETAF continuously monitors proposed rules, provides revisions, and monitors the impact that rule updates have on hospitals, surveys, and surveyor requirements. In August, TETAF submitted a letter to the Texas Department of State Health Services (DSHS) regarding concerns of the contiguous Regional Advisory Council (RAC) rule for hospitals and the survey process.

This portion of the updates to §133.201 Hospital Level of Care Designations for Maternal Care and §133.181 Hospital Level of Care Designations for Neonatal Care affects surveyor eligibility. In response to TETAF's letter, DSHS clarified which RACs are considered contiguous and stated that the list of contiguous RACs will be reevaluated prior to January 1, 2026.

Also in August, DSHS released the Texas Designation Survey Guidelines to establish a standardized structure and process for designation surveys in Texas. Initially, the guidelines were released for the trauma, stroke, maternal, and neonatal service lines, but stroke was removed shortly after the release.

The guidelines go into effect for the maternal and neonatal service lines on January 1, 2024, with trauma going into effect simultaneously with the anticipated release of the new trauma rule in 2024.

In each component of providing patient care, quality assurance must be part of the process, including providing recommendations in the development of designation rules. TETAF and Texas Perinatal Services frequently assess its own tools and processes and assess any rules or guidelines that are part of the survey verification process, which ultimately provides a stronger regional health care system.

---

## THE YEAR IN NUMBERS

TETAF is proud to work with its hospital partners across Texas. This was one of the busiest years with overlapping designation cycles. In total, TETAF/Texas Perinatal Services conducted 203 surveys that include a combination of designation/redesignation, consultation, and focused survey requests. Trauma had the most surveys, followed by maternal, neonatal, and then stroke.

During 2023, stroke centers seeking designation or redesignation that were previously classified as Level III Support stroke centers were surveyed under the new stroke rule and classified as Level IV Acute Stroke Ready. Maternal facilities were surveyed under the new maternal rule, while neonatal facilities will be surveyed under the new rule in 2024.

# TRAUMA



Trauma is the original service line to TETAF and continues to serve as the guiding model for all service lines.

[www.tetaf.org/trauma](http://www.tetaf.org/trauma)

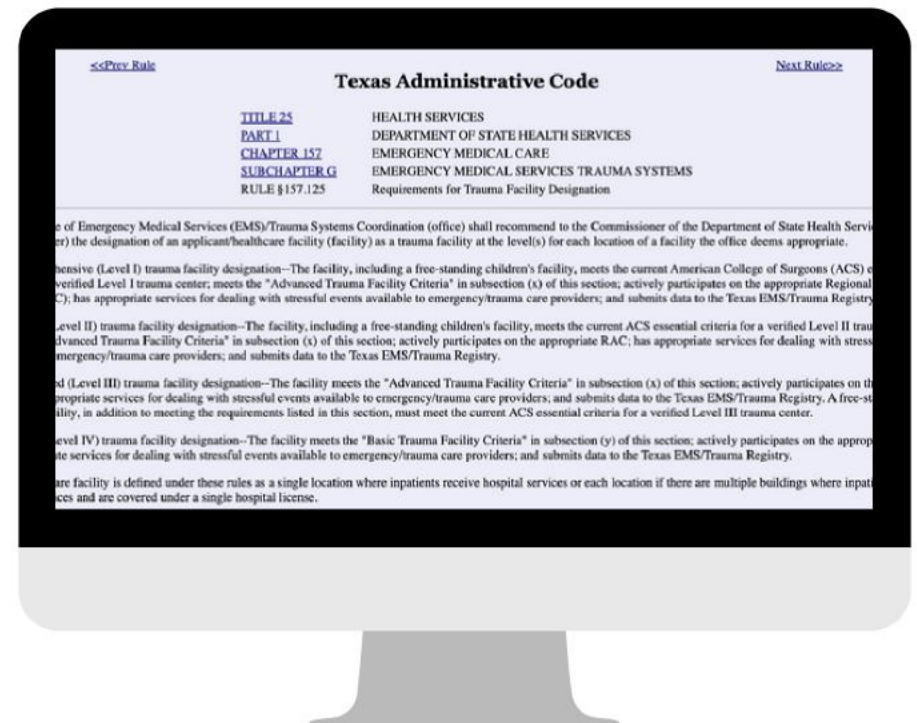


# A WORK IN PROGRESS WITH TRAUMA DESIGNATION RULE REVISIONS

The trauma survey service line is the original service line to TETAF and as a result, TETAF has had an extensive role through the years in the rule revision process for Texas Administrative Code §157.125 Requirements for Trauma Facility Designation. This year was no exception as TETAF monitored the rule revision progress.

The current rule went into effect in 2006 with ongoing discussion since then. The revision process moved forward in 2022 with an informal public comment period and TETAF submitted recommendations for the rule revisions. The Texas Department of State Health Services (DSHS) reviewed the comments and sent the rule back to the rule coordination office for further review. The formal public comment period is anticipated to open in January 2024 with an anticipated rule effective date in May 2024.

The TETAF survey team will provide feedback during the formal public comment period. Once the rule is in effect, TETAF will work with surveyors and hospitals to ensure compliance to the new rule.



# STROKE



Early and optimal stroke care has been an important part of TETAF's mission since its beginning.

[www.tetaf.org/stroke](http://www.tetaf.org/stroke)

# ONE YEAR OF SURVEYING TO THE NEW STROKE RULE

Stroke centers surveyed by TETAF in 2023 were surveyed to the new Requirements for Stroke Facility Designation in the Texas Administrative Code (TAC). These facilities that previously worked to achieve Level III designation as stroke centers are now verified as Acute Stroke Ready hospitals under the new rule that went into effect in September 2022.

The rule now aligns with national stroke standards and advancements made since the rule was last adopted in 2006. The update increased stroke leveling to four levels and includes revisions that affect all levels of stroke care in Texas.

TETAF has a team of experienced stroke surveyors who provide survey verification services for 19 rural Texas hospitals.



# NEONATAL



TETAF established Texas Perinatal Services using its proven, quality assurance model to focus on perinatal care. The first service line to launch was neonatal.

[www.texasperinatalervices.org/nicu-surveys](http://www.texasperinatalervices.org/nicu-surveys)

## TEXAS PERINATAL SERVICES EXPANDS ITS TEAM

TETAF/Texas Perinatal Services (TPS) expanded its team in 2023 with the addition of Jorge Castañon, MSN, RN as the perinatal operations coordinator. Prior to joining the TETAF team, Jorge served as a neonatal program coordinator at El Paso Children's Hospital.

In his role with TETAF/TPS, Jorge focuses on the neonatal service line, attends surveys, and assists with the scheduling process. Jessica Phillips, MAS, BSN, RNC-OB, C-EFM, C-ONQS, perinatal program director, will continue to lead perinatal operations and focus on the maternal service line.

## PREPARING FOR NEW NEONATAL LEVEL OF CARE DESIGNATION RULE

The new Neonatal Level of Care Designation rule went into effect in June and hospital facilities will be surveyed to the new rule in January 2024. Texas Perinatal Services (TPS) has provided training for its surveyors to ensure adherence to the rule. Additionally, Jessica Phillips, perinatal program director, has provided live informational sessions to outline the rule updates to hospital partners.

Out of all facilities that require an on-site survey in Texas, TPS surveys 70% of the hospitals designated.

---

## BRINGING STATE AND NATIONAL NEONATAL INSIGHT TOGETHER

TETAF/Texas Perinatal Services (TPS) actively collaborates with perinatal organizations at local, state, and national levels. Jessica Phillips, TPS' perinatal program director, once again attended the Texas Collaborative for Healthy Mothers and Babies (TCHMB) Summit in February, the Association of Women's Health, Obstetric and Neonatal Nurses (AWHONN) National conference in June, the AWHONN Texas conference in July, and the National Association of Neonatal Nurses (NANN) conference in September.

Attending state and national conferences gives TPS a greater understanding of various methods used and any differences in neonatal care across the nation.

# MATERNAL



Texas Perinatal Services continues to survey more maternal hospitals designated in Texas than any other surveying entity.

[www.texasperinatalservices.org/maternal-care-surveys](http://www.texasperinatalservices.org/maternal-care-surveys)

## LEARNING AND STRENGTHENING MATERNAL CARE THROUGH A NEW CYCLE

The new maternal cycle in 2023 required additional learning and preparation for Texas Perinatal Services (TPS), its surveyors, and its hospital partners. The new maternal designation rule, along with the Texas Designation Survey Guidelines, led to required training by the Texas Department of State Health Services (DSHS). Additionally, TPS provided informational sessions to ensure its surveyors and hospital partners had a robust understanding of the changes prior to surveying.

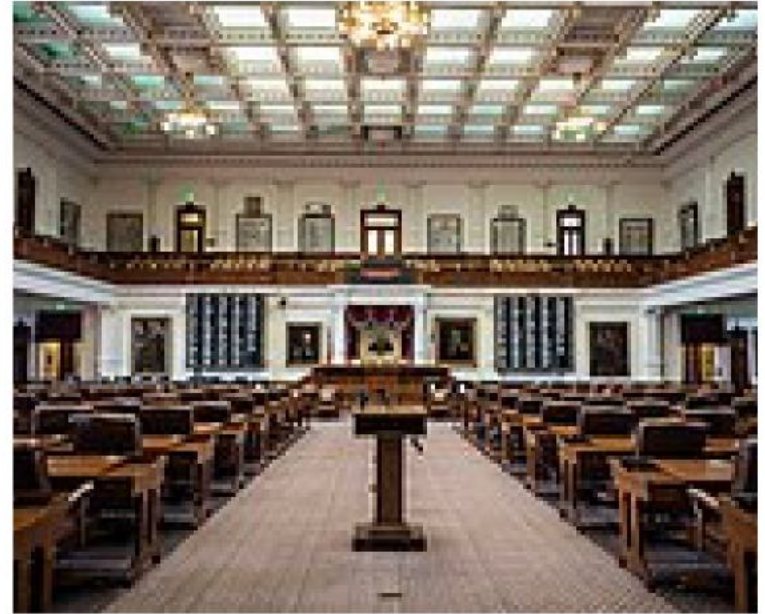
As part of its ongoing coach to success method, TPS implemented quarterly update meetings, in addition to any training, to provide the opportunity for discussion, questions, and to share any new developments.

## MATERNAL IS SECOND SERVICE LINE SURVEYED TO NEW RULE

New requirements and expectations were part of the maternal survey process in 2023. The Hospital Level of Care Designations for Maternal Care and Placenta Accreta Spectrum Disorder (PASD) went into effect in January. Maternal hospitals are now accountable for the new criteria and to integrate the PASD requirements into their maternal program.

Texas Perinatal Services (TPS) continued to provide education regarding designation for its hospital partners and surveyors through its community in Mighty Networks. TPS provides survey services for 65% of the hospitals requiring an on-site survey in Texas.

# ADVOCACY



Since its inception, TETAF has actively provided advocacy and public policy services, and regulatory arenas. TETAF has become the go-to source for lawmakers as it fills a unique niche representing the different aspects of the health care system.

[www.tetaf.org/advocacy](http://www.tetaf.org/advocacy)



# AN UNPRECEDENTED LEGISLATIVE SESSION

The 88th Texas Legislature was unprecedented with a historic \$33 billion surplus in the budget. The TETAF Advocacy team, consisting of staff, the TETAF Advocacy Committee, and the lobby team, strategized frequently during the interim.

Determining the priorities early was critical to prioritizing the focus for what TETAF should advocate and what TETAF should provide support to other organizations. This was imperative to clearly advocating needs as many state agencies and organizations were vying for funding.

The TETAF Legislative Priorities were developed by the TETAF Advocacy team, with leadership from the TETAF Advocacy Committee that met bi-weekly, and approved by the TETAF Board of Directors prior to the start of the 88th Texas Legislative Session:

- Preserve and increase funding for regional health care systems;
- Increase funding for Regional Advisory Councils (RACs);
- Improve and fund statewide health data collection efforts;
- Establish a statewide perinatal database, and
- Improve efforts focused on the health care worker shortage.

TETAF also provided public testimony at the Capitol, conducted bi-weekly meetings with the TETAF Legislative Work Group, created handouts and sample letters for stakeholders to advocate, and spent numerous hours speaking with legislators. In addition, to monitoring more than 90 bills and providing input on many, TETAF drafted and submitted two legislative riders. One rider requested funding for a statewide perinatal database and the other requested funding for the RACs.

Any legislation that could result in a positive or potentially negative impact to trauma, stroke, maternal, neonatal, and emergency care, plus the RACs, the TETAF Advocacy team took an active role to ensure legislators understand why legislation could help or hurt our emergency and health care system in Texas.

# ADVOCATING DURING THE INTERIM LEADS TO THE LARGEST FUNDING INCREASE FOR THE REGIONAL ADVISORY COUNCILS

One of the most significant wins during the 88th Legislative Session reflects the importance of advocating during the interim. In 2022, TETAF leadership met with the leadership from the Texas Department of State Health Services (DSHS) and followed up with a meeting in January 2023. At that meeting, DSHS leadership shared that the agency would update its exceptional item requests to include a request of \$6.6 million for the biennium to the Regional Advisory Councils (RACs), recognizing the increased responsibilities of the RACs.

Then in February, TETAF Board of Directors member and Advocacy Committee Chair, Wanda Helgesen, traveled to Austin two weeks in a row to provide public and written testimony during the Senate Finance Committee hearing on Article II of the state budget and then the House Appropriations Committee hearing on Article II. Article II focused on the budget for the Texas Health and Human Services and DSHS. Helgesen testified not only as a member of the TETAF Board but also as executive director of the Border RAC.

Throughout the remainder of the session, the TETAF Advocacy team conducted numerous meetings and calls, plus provided stakeholders with talking points, handouts and letters to advocate for funding for the RACs. The funding was approved by the House

and Senate during the legislative session.

This increase is the largest since RAC funding was established and is an almost 70% increase in funding.

---

## ENSURING LEVEL FUNDING FOR THE STATE'S TRAUMA SYSTEM

The dedicated account to provide funding for the Texas Trauma System is known as Account 5111. This session, the priority was to ensure level funding due to collections for Account 5111 decreasing.

The legislature acknowledged this by appropriating General Revenue dollars to make up the difference. A total of \$96 million for FY24 and \$98.1 million for FY25 will be appropriated to Account 5111. In addition, Sen. Joan Huffman (R-Houston), chair of the Senate Finance Committee, intends to examine current collections and determine where improvements need to be made during the next legislative session.

# ADVOCATING FOR MOTHERS AND NEWBORNS IN TEXAS

As one of the TETAF Legislative Priorities, TETAF advocated for \$5 million in funding to establish a statewide perinatal database to gather consistent data, through an established and reliable process. While it is believed that levels of care designations for neonatal and maternal care have improved care for mothers and babies, Texas lacks the granular, patient-centric data to have a more comprehensive perspective to improve the outcomes of the most fragile newborns and vulnerable mothers. TETAF drafted and submitted a rider requesting this funding.

TETAF worked with the Texas Collaborative for Healthy Mothers and Babies (TCHMB), which is the perinatal quality collaborative for Texas. TCHMB developed a white paper outlining the critical need for a statewide perinatal database that could not only help to improve maternal outcomes, but also the health and safety of approximately 400,000 babies born annually in Texas.

The TETAF Advocacy team held meetings with key legislators, submitted letters, and developed template letters and documents that were shared with a broad base of perinatal supporters in Texas, including competitors with TETAF's perinatal division, Texas Perinatal Services.

Legislators approved \$10.9 million for the biennium for the Maternal Health Quality Improvement System and Maternal

Mortality Review Information Application to improve data quality; however, it is not the statewide perinatal database that TETAF, and other organizations, advocated to improve outcomes for mothers and newborns in Texas. The TETAF Advocacy team will continue during the interim and during the 89th Texas Legislature to advocate for opportunities that lead to greater perinatal outcomes.

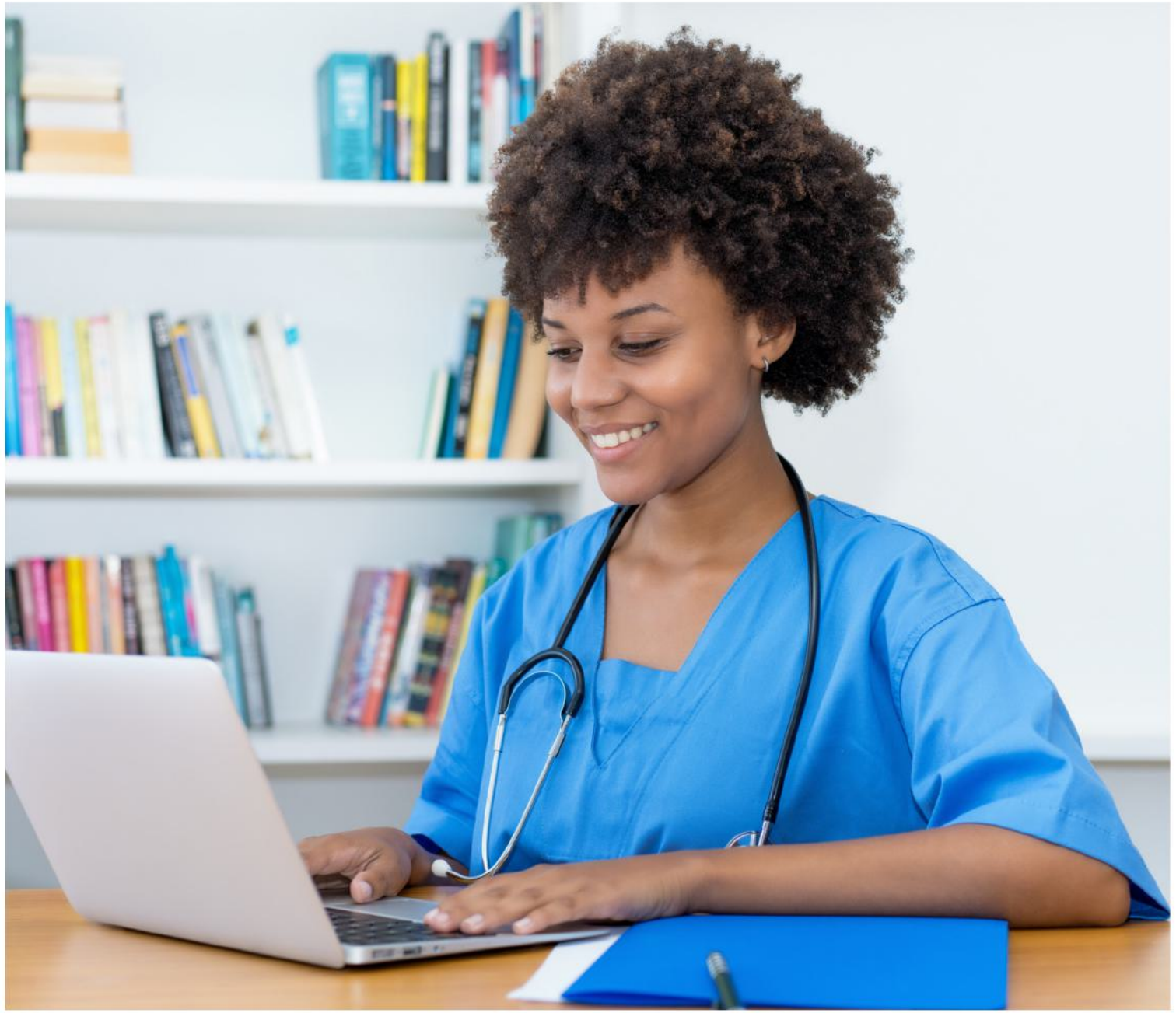
---

## ADVOCATING ON CAPITOL HILL

TETAF president and CEO, Dinah Welsh, and perinatal program director, Jessica Phillips, MAS, BSN, RNC-OB, C-EFM, C-ONGS, joined others across the country for advocacy days in Washington, D.C.

Welsh attended the Trauma Center Association of America (TCAA) in April. The Trauma Advocacy Institute and Lobby Day focuses on issues affecting trauma centers and systems. Also in April, Phillips joined the Association of Women's Health and Obstetric Neonatal Nurses (AWHONN) on Capitol Hill. The group advocated for issues such as the Workplace Violence Prevention for Health Care and Social Service Workers Act, Perinatal Workforce Act, and Mothers Offspring Mortality and Morbidity Awareness (MOMMA's) Act.

# EDUCATION



A key component for TETAF to consistently achieve excellence in trauma, emergency, neonatal, and maternal patient care is offering educational opportunities.

[www.tetaf.org/tetafeducation](http://www.tetaf.org/tetafeducation)

## TETAF WELCOMES NEW EDUCATION COORDINATOR

TETAF welcomed Courtney Edwards, DNP, MPH, RN, CCRN, CEN, TCRN, NEA-BC as the new education coordinator for TETAF. Courtney has been involved with TETAF's education and injury prevention for many years. As a past member of the TETAF Board of Directors, she helped to secure TETAF becoming a provider of continuing education. Courtney is an injury prevention coordinator at Parkland Health and serves on the board of the Texas Trauma Coordinators Forum (TTCF).



## TETAF HOSPITAL DATA MANAGEMENT COURSE STAYS VIRTUAL IN 2023

For the third year, TETAF offered its Hospital Data Management Course (HDMC) virtually, providing convenience to many seeking continuing education. TETAF offered the course twice in 2023.

Leading data and trauma experts present on topics such as data abstraction, data entry, trauma validation and patient information, trauma coding, and case reviews during the two-day course. Participants earn continuing education for completing the entire course and a questionnaire.

# TETAF HOSTS A STOP THE BLEED® TRAIN THE TRAINER WEBINAR

In recognition of National STOP THE BLEED® Day in May, TETAF hosted a STOP THE BLEED® Train the Trainer webinar led by Dr. Rona Miller. There were 120 individuals who attended the live webinar.

The STOP THE BLEED® Train the Trainer Course is intended to educate the RN, LVN, CRNA, MA, NP, PA, paramedic, EMT, and others how to host and lead a STOP THE BLEED® course.



# TEXAS QUALITY CARE FORUM BRINGS A VARIETY OF TOPICS TO STAKEHOLDERS

In January, TETAF and Texas Perinatal Services (TPS) expanded its Texas Perinatal Forum to become the Texas Quality Care Forum. With this update, TETAF/TPS jointly offer the forum each month dedicated to topics focused on trauma, stroke, maternal, neonatal, and acute care, as well as some EMS topics to educate our stakeholders on best practices.

To register for the forum each month, visit either the TETAF or TPS website and look for the link to register on the home page.



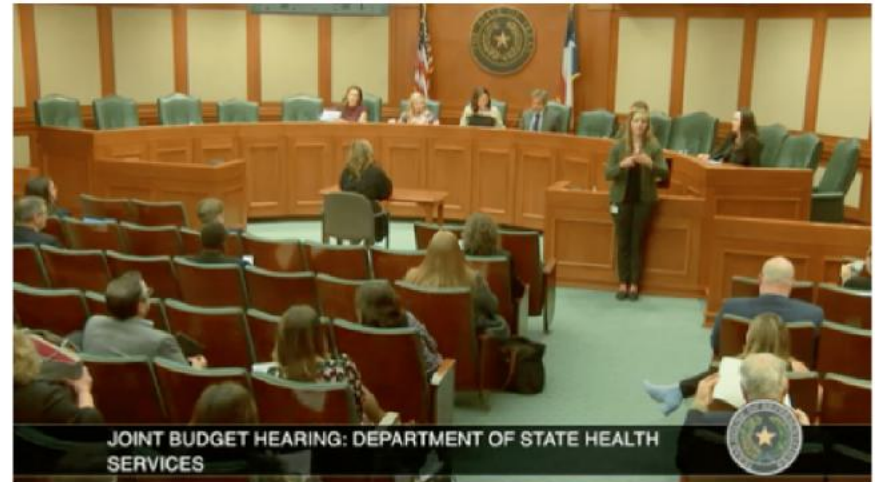


# THE TETAF AND REGIONAL ADVISORY COUNCIL COLLABORATION

The 22 Regional Advisory Councils (RACs) across Texas were established to develop, implement, and monitor a regional trauma system plan and to facilitate trauma system networking with its Trauma Service Area (TSA). The scope of work for the RACs has expanded significantly since they were formed to include disaster readiness and response, along with efforts to improve cardiac, stroke, maternal, and neonatal systems of care.

TETAF advocates on behalf of the RACs and worked diligently during the 88th Legislative Session and successfully advocated for the RACs to receive \$6.6 million in funding for the biennium.

RAC leaders also serve as members of the TETAF General Assembly, which elects members to the TETAF Board of Directors and votes on any changes to the TETAF Bylaws. TETAF also has RAC leaders who serve on the Board of Directors and on its committees.





# COLLABORATIONS



**TEXAS**  
Health and Human Services  

---

**Texas Department of State  
Health Services**



*Texas Trauma Coordinators Forum*



Texas  
Hospital  
Association



Texas Collaborative for  
Healthy Mothers and Babies



**TRAUMA CENTER**  
— Association of America —  
**ADVOCACY • FINANCE • OPERATIONS**

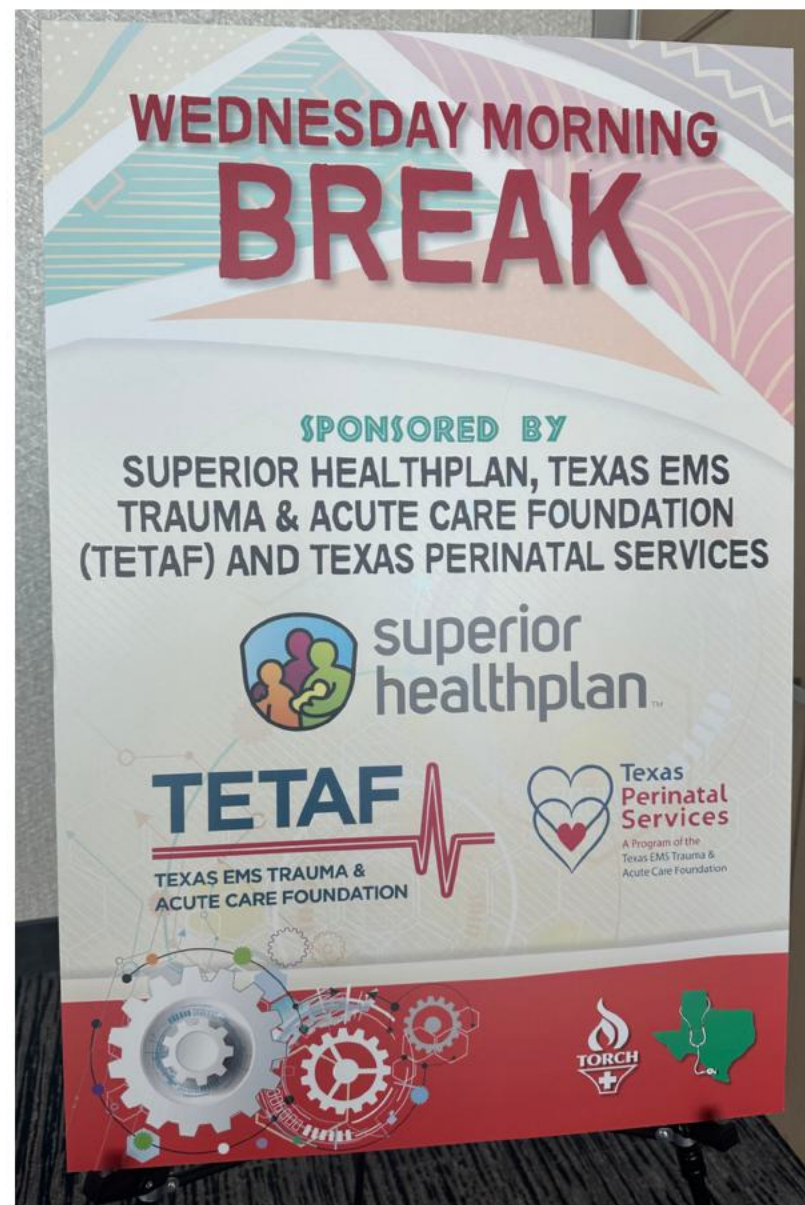
TETAF regularly works with statewide organizations to ensure processes are consistent and for a stronger regional health care systems in Texas.

# UNITING TO STRENGTHEN HEALTH CARE FOR TEXANS

For 15 years, TETAF has actively worked with organizations that also have a significant role in trauma, stroke, maternal, neonatal, and acute care in Texas. Since then, TETAF has expanded its collaborations to include supporting and sponsoring events to bring informative and educational opportunities to stakeholders.

In 2023, TETAF's president and CEO, Dinah Welsh, continued to participate in Governors EMS and Trauma Advisory Council (GETAC) meetings by providing regular updates. TETAF's survey services senior director, Terri Rowden, provided updates during the Texas Trauma Coordinators Forum (TTCF) meetings. Texas Perinatal Services' (TPS) perinatal program director, Jessica Phillips, attended the Perinatal Advisory Council (PAC) meetings in-person.

Additionally, TPS once again sponsored the Texas Collaborative for Healthy Mothers and Babies (TCHMB) Summit to bring informative presentations on perinatal care to Texas. TETAF also returned as a sponsor of the Texas Organization of Rural and Community Hospitals (TORCH) fall conference. TETAF will continue to collaborate with these and other organizations as we all work together for the common goal of quality care in Texas.



# TEXAS TQIP



Since 2016, the Texas Trauma Quality Improvement Program (Texas TQIP) collaborative has worked to strengthen the quality of trauma care for patients in Texas trauma centers. TETAF proudly sponsors and supports the Texas TQIP.

[www.tetaf.org/tx-tqip-about](http://www.tetaf.org/tx-tqip-about)

# A NEW LEADER AT THE HELM OF TEXAS TQIP COLLABORATIVE

The Texas Trauma Quality Improvement Program (TQIP) Collaborative met in April and took a brief pause to reorganize due to leadership changes. Dr. Carlos Palacio led the Collaborative's December meeting in Louisville, Kentucky during the national TQIP meetings.

Texas TQIP continues to focus on a variety of initiatives with a goal of improving trauma care statewide. TETAF acknowledges the dedication and purpose of the Texas TQIP through its support of efforts made to improve trauma patient care in Texas.

Learn more about Texas TQIP and its developments at [www.tetaf.org/tx-tqip-about](http://www.tetaf.org/tx-tqip-about).



# FINANCIALS



TETAF is solely supported by verification survey fees, subscription fees, educational program fees, and tax-deductible donations.

# FY 2022-2023 TOTAL OPERATING/DIRECT EXPENSE BUDGET

\$1,783,218

Salary and Benefits (Operating Expenses/Direct)	\$800,844
Survey Direct Expenses	\$602,674
Program Related	\$80,818
Administrative & Professional	\$145,041
General Operating Expenses	\$57,085
<b>Actual Total Operating Expenses</b>	<b>\$1,686,462</b>

## FY 2022-2023 REVENUE

Trauma/Stroke Survey	\$1,100,400
Maternal Care Survey	\$467,000
Neonatal Care Survey	\$273,500
Education	\$18,135
Subscription	\$60,000
Other	\$20,412
<b>Actual Total Revenue</b>	<b>\$1,939,447</b>

# ABOUT US



Ensuring quality care in trauma, stroke, maternal, and neonatal takes a team. Together, our team, our board of directors, and our hospital partners share the same mission and goals to give Texas patients the best outcome.

[www.tetaf.org/about-tetaf](http://www.tetaf.org/about-tetaf)

# OUR TEAM

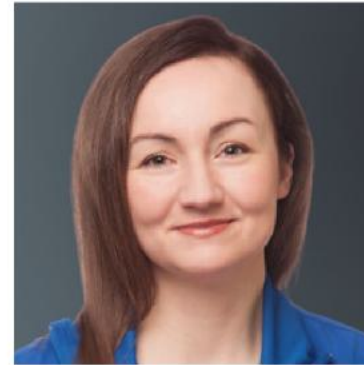
---



**DINAH S. WELSH**  
*President & CEO*



**TERRI ROWDEN,**  
**BSN, RN, TCRN**  
*Survey Services Senior  
Director*



**JESSICA PHILLIPS,**  
**MAS, BSN, RNC-OB,**  
**C-EFM, C-ONQS**  
*Perinatal Program  
Director*



**ERIN MOORE**  
*Communications  
Director*



**AARON ROGERS**  
*Survey Operations  
Manager*



**JENNIFER  
ANDERSON**  
*Business  
Administrator*



**JORGE CASTAÑÓN,**  
**MSN, RN**  
*Perinatal Program  
Coordinator*



# 2023 TETAF BOARD OF DIRECTORS

---



**CRAIG RHYNE, M.D.**  
Chair  
*Lubbock*  
(Retd.) Regional Chief Medical  
Officer at Covenant Health System



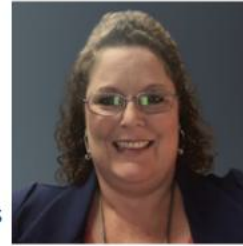
**DUDLEY WAIT, EMT-P**  
Vice Chair  
*Rosenberg*  
Chief of EMS at Fort Bend County



**RICKY REEVES, EMT-P**  
Secretary  
*Lewisville*  
Executive Director at Texas EMS



**KATHY PERKINS, RN, MBA**  
Treasurer  
*San Antonio*  
(Retd.) Asst. Commissioner for  
Regulatory Services at Texas  
Department of State Health Services



**CHRISTINE REEVES**  
General Assembly Chair  
*Belton*  
Executive Director at Central  
Texas Regional Advisory Council



**SCOTT CHRISTOPHER, BBA,  
BSN, RN, LP**  
*Lufkin*  
RN at Total Point Emergency  
Center



**JESSICA EHRIG, M.D., FACOG**  
*Temple*  
Maternal Medical Director and  
Maternal Transport Director at  
Baylor Scott & White - Temple



**ERNEST GONZALEZ, M.D., FACS**  
*Austin*  
Trauma Surgeon at Texas Acute  
Care Surgery



**DIANA GRIMM-MAPP, RN, BSN,  
CEN, TCRN**  
*Galveston*  
(Retd.) Program Director at  
UTMB Health System

# 2023 TETAF BOARD OF DIRECTORS (CONTINUED)

---



**WANDA HELGESEN, RN, MSN**  
*El Paso*  
Executive Director at Border  
Regional Advisory Council



**DAN LITTLE, M.D.**  
*Temple*  
Chief of Pediatric Surgery at  
McLane Children's Hospital



**RHONDA MANOR-COOMBES,  
BSN, RN, TCRN**  
*Austin*  
Trauma Program Manager and  
Stroke Coordinator at Baylor Scott  
& White - Lakeway



**KENNETH MATTOX, M.D., FACS**  
*Houston*  
Distinguished Service Professor at  
Baylor College of Medicine and  
Retired Chief of Staff at  
Ben Taub Hospital



**JOSEPH PETTY, M.D., FACOG,  
MBA**  
*Tyler*  
Director of Quality and Education  
at Family Circle of Care



**ED RACHT, M.D.**  
*Austin*  
Chief Medical Officer at Global  
Medical Response



**KATE SCHAEFER, RN, CEN,  
NREMT**  
*Childress*  
Trauma Program Manager and  
Emergency Department Director  
at Childress Regional Medical  
Center



**DANNY UPDIKE, RN, CCRN,  
EMT-LP**  
*San Angelo*  
Executive Director at the Concho  
Valley Regional Advisory Council



**DAVID WEISOLY, D.O.**  
*The Woodlands*  
Practice Medical Director at  
Pediatrix and Obstetrix  
Specialists of Houston

# FIVE NEW LEADERS AND A NEW TETAF GENERAL ASSEMBLY CHAIR ELECTED

The TETAF General Assembly elected five individuals to the 2024 TETAF Board of Directors with terms that will expire in 2026. The General Assembly voted from the slate of 11 nominees with the five highest votes elected to the TETAF Board of Directors.

The individuals elected to the Board of Directors are:



Cherish Brodbeck,  
MSN,  
RNC-OB, LP, CMTE



Kate Drone, MJ, BSN,  
LSSBB, RNC-OB,  
C-EFM, C-ONQS



Carlos Palacio, MD,  
FACS



Jon-Michael Parker, RN,  
BSN



Traceee Rose, MSN,  
RN, CCNS-BC, CCRN-K

Additionally, the TETAF General Assembly elected a new chair who will serve on the TETAF Board of Directors. Eric Epley, CEM was elected to serve in this role in which he previously served three years ago. TETAF would like to thank outgoing General Assembly chair, Christine Reeves, for her dedication and time serving in this role.

TETAF would like to thank departing board members Diana Grimm-Mapp, RN, BSN, CEN, TCRN, Ed Racht, M.D., Christine Reeves, Ricky Reeves, EMT-P, Craig Rhyne, M.D., Dudley Wait, EMT-P for their service to TETAF and their commitment to strengthening regional health care systems across Texas.

---

## TETAF BOARD MEMBERS EARN HONORS

Two long-serving members of the TETAF Board of Directors earned recognitions in 2023. Ricky Reeves earned the 2023 Presidential Award from the Texas EMS Alliance (TEMSA) for his years of dedication and efforts with the organization.

Wanda Helgesen was named as one of the 2023 Women of Impact by El Paso, Inc.

# OUR COMMITTEES

---

## ADVOCACY

The Advocacy Committee works with TETAF and its Board of Directors on legislative issues relating to trauma, stroke, maternal, and neonatal care, plus disaster, emergency, and cardiac health care issues.

Wanda Helgesen, Chair  
Sophie Bassham  
Jordan Ghawi  
Christine Reeves  
Ricky Reeves

George Saade, M.D.  
Shawn Salter  
Debra Taylor  
David Weisoly, D.O.

## EDUCATION

This committee works with TETAF and its Board of Directors on issues relating to educational opportunities for TETAF to provide to stakeholders.

Scott Christopher, Chair  
Rose Bolenbaucher  
Jeff Donson  
Krista Easley  
Jose Gonzalez

Debbie Jenkins  
Mark Martyn  
Kenneth Mattox, M.D.  
Jon-Michael Parker  
Shirlinda Savahl

## FINANCE

The Finance/Audit Committee works with TETAF, its treasurer, and the Board of Directors to provide an independent review of TETAF's finances.

Kathy Perkins, Chair  
Jeff Beeson, D.O.  
Melinda Griffin

Craig Rhyne, M.D.  
Kate Schaefer

## GOVERNANCE

The Governance Committee works with TETAF and its Board of Directors on issues relating to board governance, including providing board member nominations to the Board of Directors.

Dudley Wait, Chair  
Douglas Havron  
Bill Morgan  
Ed Racht, MD  
Kimberly Rolfe

Scott Sagraves, MD  
Sally Snow  
Kevin Stevenson  
Gil Torres  
Danny Updike  
Wendell Wiley

## SURVEY VERIFICATION

This committee works with TETAF and its Board of Directors on matters relating to the survey verification process and how TETAF conducts surveys.

Dan Little, MD, Chair  
Jacky Betts  
Stephen Flaherty, MD  
Diana Grimm-Mapp  
Kay Hatton  
Michelle Hempel

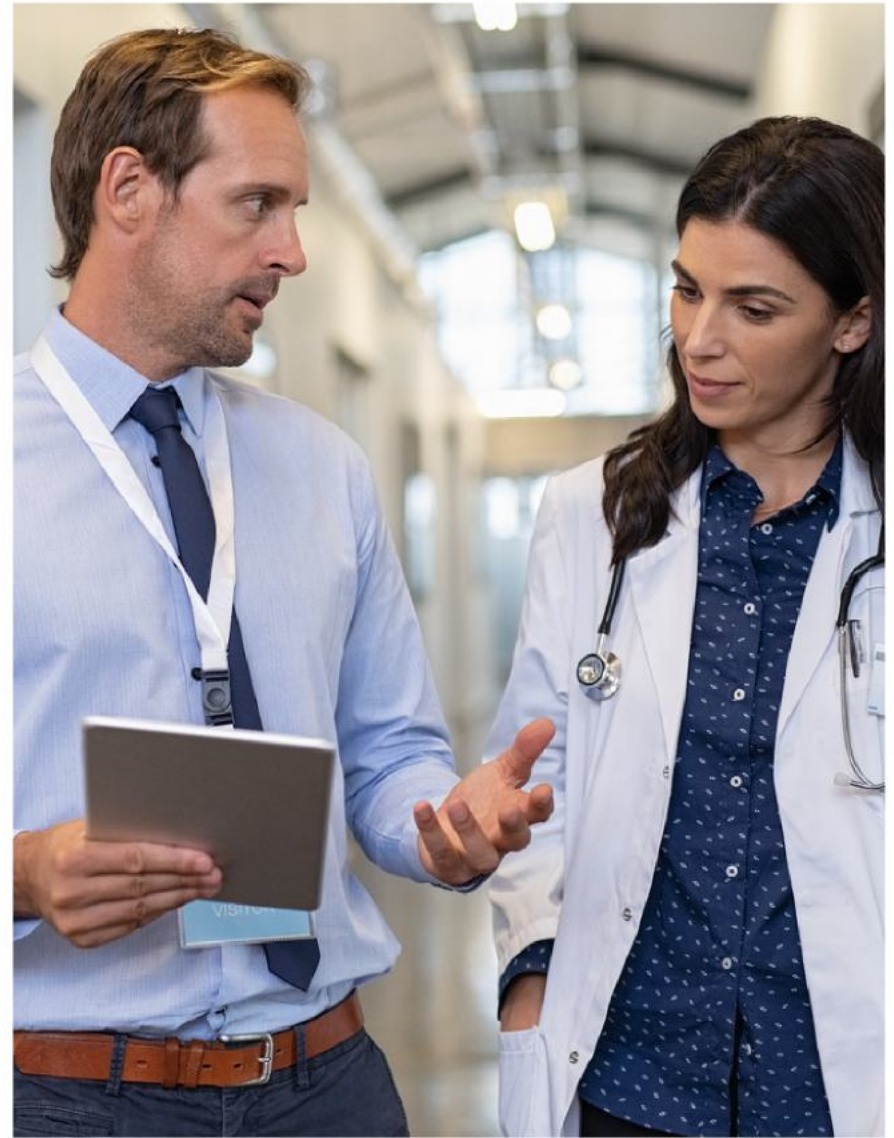
Dwayne Howerton  
Lisa Hutchison  
Chris Joyal  
Rhonda Manor-Coombes  
Kathy Rodgers  
Danielle Sherar

## OUR SURVEYORS

TETAF and Texas Perinatal Services (TPS) are honored to work with the remarkable surgeons, physicians, and program managers who have given their time and expertise to serve as surveyors. TETAF has a thorough surveyor selection process. Our surveyors bring a wealth of knowledge to the process and are known to make a lasting impact with the hospital teams. Before they attend a survey, they are trained using our coach to success methods. Once they complete an initial training, they travel and attend surveys across Texas.

Our surveyors bring diverse backgrounds. Most TETAF/TPS surveyors are in Texas, but some are located outside of the Lone Star State. This allows the TETAF Survey Team the ability to schedule an appropriate surveyor for each verification survey.

TETAF/TPS greatly appreciates the dedication and level of expertise given by each surveyor to ensure a successful survey and quality care for patients.

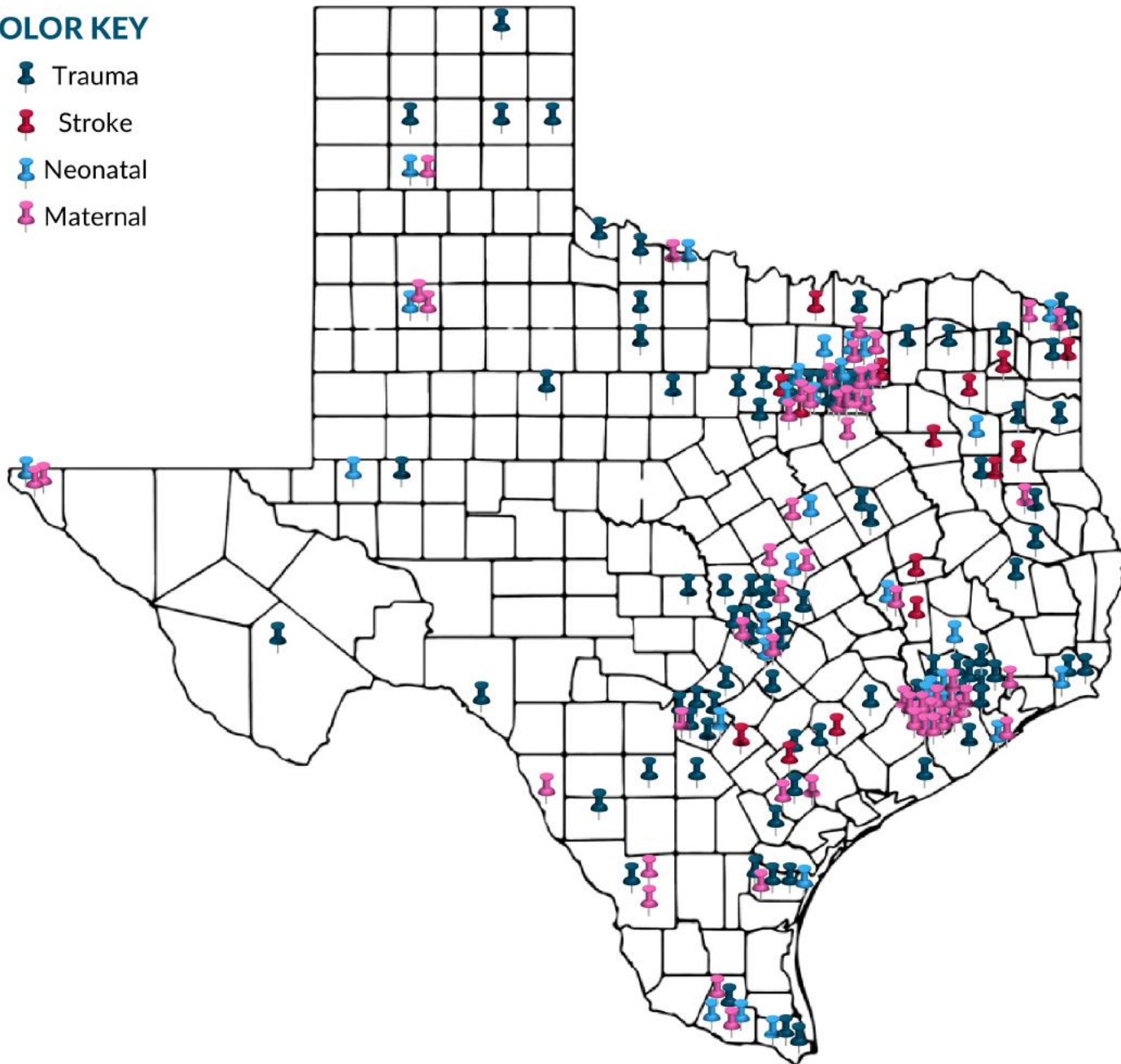


# OUR HOSPITAL PARTNERS IN 2023

---

## COLOR KEY

- Trauma
- Stroke
- Neonatal
- Maternal



# OUR HOSPITAL PARTNERS IN 2023

## TRAUMA

Ascension Seton Edgar B. Davis Hospital	CHI St. Luke's Health Memorial - Livingston	Dallas Medical Center	Lyndon B. Johnson Hospital
Ascension Seton Highland Lakes Hospital	CHI St. Luke's Health Memorial - Lufkin	DeTar Healthcare System North	Matagorda Regional Medical Center
Ascension Seton Medical Center Austin	CHRISTUS Good Shepherd Medical Center - Marshall	Dimmit Regional Hospital	Medical City Alliance
Ascension Seton Northwest	CHRISTUS Mother Frances Hospital - Jacksonville	Doctors Hospital of Laredo	Medical City Las Colinas
Ascension Seton Southwest	CHRISTUS Mother Frances Hospital - Sulphur Springs	Driscoll Children's Hospital	Medical City North Hills
Baptist Hospitals of Southeast Texas	CHRISTUS Southeast Texas St. Elizabeth	Fisher County Hospital District	Medical City Weatherford
Baylor Scott & White All Saints Medical Center	CHRISTUS Spohn Hospital - Beeville	Frio Regional Hospital	Memorial Hermann Cypress Hospital
Baylor Scott & White Medical Center - Lakeway	CHRISTUS Spohn Hospital Corpus Christi - South	Hardeman County Memorial Hospital	Memorial Hermann Greater Heights
Baylor Scott & White Medical Center - Round Rock	CHRISTUS St. Michael Health System	Harlingen Medical Center	Memorial Hermann Katy Hospital
Baylor Scott & White Medical Center - Taylor	CHRISTUS St. Michael Hospital - Atlanta	Hunt Regional Medical Center	Memorial Hermann Memorial City Medical Center
Big Bend Regional Medical Center	Columbus Community Hospital	Lake Granbury Medical Center	Memorial Hermann Southwest Hospital
BSA Health Systems	Corpus Christi Medical Center - Doctor's Regional	Limestone Medical Center	
Cedar Park Regional Medical Center	Cuero Regional Hospital	Longview Regional Medical Center	

# OUR HOSPITAL PARTNERS IN 2023

---

## TRAUMA

Memorial Hermann Sugar Land Hospital	Northeast Methodist Hospital	Seymour Hospital	Titus Regional Medical Center
Methodist Hospital Atascosa	OakBend Medical Center - Jackson Street	South Texas Health System Edinburg	UTMB Health Clear Lake Campus
Methodist Hospital Metropolitan	OakBend Medical Center - Williams Way	St Luke's Health - Sugar Land	Val Verde Regional Medical Center
Methodist Richardson Medical Center	Ochiltree General Hospital	St. David's Medical Center	Valley Regional Medical Center
Methodist Specialty and Transplant Hospital	Palo Pinto General Hospital	St. Joseph Medical Center	Wadley Regional Medical Center
Methodist Stone Oak Hospital	Pampa Regional Medical Center	Stephens Memorial Hospital	White Rock Medical Center
Mid Coast Medical Center Central Llano	Parkview Hospital	Sweeny Community Hospital	Wilbarger General Hospital
Midland Memorial Hospital	Parkview Regional Hospital	Texas Health Frisco Hospital	William P Clements Jr University Hospital
Mission Trail Baptist Hospital	Resolute Baptist Hospital	Texoma Medical Center	Yoakum Community Hospital
Nacogdoches Memorial Hospital	Seton Medical Center Harker Heights	Throckmorton County Memorial Hospital	



# OUR HOSPITAL PARTNERS IN 2023

---

## STROKE

CHI St. Joseph Health Burseson Hospital

UT Health East Texas Henderson Hospital

CHI St. Joseph Health Grimes Hospital

UT Health East Texas Pittsburg Hospital

CHI St. Joseph Health Madison Hospital

UT Health Jacksonville

CHRISTUS St. Michael Hospital Atlanta

UT Health Quitman

Connally Memorial Medical Center

Yoakum Community Hospital

Cuero Regional Hospital

North Texas Medical Center

Texas Health Harris Methodist Hospital - Azle

Texas Health Hospital Rockwall

UT Health East Texas Athens Hospital

# OUR HOSPITAL PARTNERS IN 2023

---

## NEONATAL

Baylor Scott & White All Saints Medical Center	HCA Houston Healthcare Kingwood	Methodist Dallas Medical Center	University Medical Center
Baylor Scott & White McLane Children's Medical Center	HCA Houston Healthcare Kingwood	Methodist Metropolitan Hospital	University of Texas Medical Branch Hospital
Baylor Scott & White Medical Center - Hillcrest	HCA Houston Healthcare Tomball	Northwest Texas Healthcare System	Valley Baptist Medical Center - Brownsville
Baylor Scott & White Medical Center - Irving	John Peter Smith Hospital	Odessa Regional Medical Center	Wadley Regional Medical Center
Baylor Scott & White Medical Center - McKinney	Knapp Medical Center	Rio Grande Regional Hospital	
CHI St. Joseph Health College Station Hospital	Medical City Lewisville	St. David's Medical Center	
CHRISTUS Mother Frances Hospital - Tyler	Medical City Plano	St. David's South Austin Medical Center	
CHRISTUS Southeast Texas St. Elizabeth	Memorial Hermann Memorial City Medical Center	St. Joseph Medical Center	
Corpus Christi Medical Center Bay Area	Memorial Hermann Southwest Hospital	Texas Health Arlington Memorial Hospital	
El Paso Children's Hospital	Memorial Hermann The Woodlands Medical Center	United Regional Health Care System	

# OUR HOSPITAL PARTNERS IN 2023

---

## MATERNAL

AdventHealth Central Texas	Baylor Scott & White Medical Center - Round Rock	Doctors Hospital of Laredo	Laredo Medical Center
Baptist St. Anthony Hospital	Baylor Scott & White Medical Center - Temple	Fort Duncan Regional Medical Center	Medical City Plano
Baylor Scott & White All Saints MC - Fort Worth	Baylor Scott & White Medical Center - Waxahachie	HCA Houston Healthcare Kingwood	Memorial Hermann Southeast Hospital
Baylor Scott & White Medical Center - Centennial	CHI St Luke's The Woodlands	HCA Houston Healthcare Tomball	Memorial Hermann The Woodlands Medical Center
Baylor Scott & White Medical Center - College Station	CHRISTUS Spohn South Hospital	Houston Methodist Baytown Hospital	Methodist Dallas Medical Center
Baylor Scott & White Medical Center - Hillcrest	CHRISTUS St. Michael Health System	Houston Methodist Hospital	Methodist Metropolitan Hospital
Baylor Scott & White Medical Center - Irving	Citizens Medical Center	Houston Methodist Sugar Land Hospital	Methodist Richardson Medical Center
Baylor Scott & White Medical Center - Lake Pointe	Covenant Children's Hospital	Houston Methodist The Woodlands Hospital	Nacogdoches Medical Center
Baylor Scott & White Medical Center - Lakeway	Dallas Regional Medical Center	Houston Methodist West Hospital	Parkland Memorial Hospital
Baylor Scott & White Medical Center - McKinney	DeTar Healthcare Systems	Houston Methodist Willowbrook Hospital	South Texas Health System McAllen

# OUR HOSPITAL PARTNERS IN 2023

---

## MATERNAL

South Texas Health Systems Edinburg

University Medical Center of Lubbock

St. David's Medical Center

University of Texas Medical Branch Hospital

St. Joseph Medical Center

Wadley Regional Medical Center

Texas Health Arlington Memorial Hospital

Texas Health Huguley Hospital

Texas Health Resources Presbyterian Dallas

The Hospitals of Providence East Campus

The Hospitals of Providence Memorial Campus

The Woman's Hospital of Texas

United Regional Healthcare Systems

# A LOOK AHEAD TO 2024

The 16th year for TETAF is set to be another exciting and busy year:

- 35th anniversary of the Texas Trauma System
- Trauma designation rule anticipated to go into effect
- Expansion of TETAF team to meet the growing needs of regional health care systems
- Neonatal facilities to be surveyed under the new designation rule
- Preparations for the 89th Texas Legislative Session, including a focus on expanding uncompensated trauma care funding
- Work with statewide leaders to make a perinatal database in Texas a reality, and ultimately improve outcomes for mothers and babies
- Offering continuing education through the Texas Quality Care Forum
- Two TETAF Hospital Data Management Courses planned
- Sponsoring the 2024 Texas Collaborative for Healthy Mothers and Babies Summit
- Sponsoring the SPEAK UP Champion Course in Galveston

And these are just the highlights.

We look forward to working with our TETAF Board of Directors, TETAF committees, hospital partners, Regional Advisory Councils, and stakeholders in 2024!





**TETAF**

TEXAS EMS TRAUMA &  
ACUTE CARE FOUNDATION



**Texas  
Perinatal  
Services**

A Program of the  
Texas EMS Trauma &  
Acute Care Foundation

3400 Enfield Road  
Austin, TX 78703  
512-524-2892



Connect